

PREDICTION OF HEART DISEASE BY USING BIO INSPIRED ALGORITHMS

*Dr.Vaka Murali Mohan¹.,G.Jyothirmai².,G.Meenakshi³.,C.Kavya Reddy⁴.,
K.Supriya⁵*

*1 Principal & Professor, Department Of CSE., Malla Reddy College Of Engineering For Women.,
Maisammaguda.,*

Medchal.,Ts, India (✉murali_vaka@yahoo.com)

*2, 3, 4, 5 B.Tech CSE, (19RG1A05E0, 19RG1A05E1, 19RG1A05D1, 19RG1A05E9),
Malla Reddy College Of Engineering For Women., Maisammaguda., Medchal., Ts, India*

Abstract:

The leading cause of death worldwide is cardiovascular disease (CVD), sometimes known as a heart problem. amount of fatalities worldwide over several decades, and is now the leading cause of mortality worldwide. Sickness, not only in India but everywhere else too.

Cardiovascular disease risk assessment is an important clinical data analysis is a difficulty. Therefore, there is a requirement for credible, feasible, and doable way to quickly identify and treat illnesses with comparable symptoms.

Algorithms for Machine Learning and Many different methods for automating the analysis of large and complex medical datasets have been applied.

Data.

Several researchers have been experimenting with various machine learning techniques to aid doctors and other medical professionals in identifying cardiac conditions. This undertaking provides an overview of related models, and compares and contrasts how they performance. The primary goal of this layout is to provide a reliable methodology for cardiac illness prediction. So, at we conclude by comparing our (Genetic) method to the BAT and BEE algorithms and demonstrating that an efficient algorithm was developed. In addition, we make projections about the outcome by selecting a few data.

1. INTROCUCTION

McKinsey found that 50% of U.S. adults suffer from chronic health issues. Also, chronic illness accounts for 80% of the cost of medical care in the United States. Using the rising rates of chronic disease coincide with rising standards of living. The US has annually allotted a median of 2.7 trillion yen to combating chronic infections.

Included in this total is 18% the total annual GDP in the United States. The problem of chronic sickness in medical care is important in a lot of other countries also. Chronic diseases are a major factor in China's 86.6% of deaths in 2015 were related to diet and chronic diseases, according to a Chinese survey. Are a result of persistent infections. Therefore, assessing the potential for chronic diseases is

fundamental. As technology advances in the medical field, accumulating electronic health records (EWR) is becoming more important. is more and more beneficial with time. Additionally, the first bio-enhanced elite execution was introduced. Diverse perspective on vehicle telematics to accommodate the wide range of mobile customers' Using state-of-the-art methods for organizing massive amounts of continuously collected health-related data, various vehicle-based groups. Information on the patient's medical history, lab findings, and other hard facts are stored in the EWR, giving us the ability to pick out information-driven solutions that could help bring down the cost of doing a clinical trial in context. Ideally, a large-scale computation for sharing information has been dealing with the complications that arise from using cloud-based methods for telehealth data collecting. A possible use case is to identify high-risk individuals, which may then be utilized to cut down on clinical costs. need expensive medical care very often. In addition, the primary document advocating for digital medical services real-world structure, it imaginatively introduced the concept of medical care apps based on patients' expectations, measuring the potential dangers to one's health. Normal expectations based on conventional illness risk models means a computer has done some kind of math (for example, "strategic relapse and relapse investigation," "etc."). A targeted learning calculation that makes use of naming conventions to be ready for model. High-risk patients may be grouped together, and low-risk patients can be grouped together, in the test set. These models are

well recognized as being useful in therapeutic settings.

That being said, the benefits and flaws of these blueprints are intertwined. In most cases, there isn't a lot of data available; however, for people with illnesses with experiences shape the characteristics that one has. Whatever the case may be, these selected features possible failure to keep up with the escalating nature of the disease and its effects.

As a result of development in due to the tremendous advancements in information analysis, sickness prediction from from the point of view of big data analysis, several studies have been conducted by picking out characteristics.

Naturally, from a large amount of data, one can concentrate on the precision of hazard order, rather than the more recent selected features. However, the focus of this recent work was on structured data. For example: sorting text using convolutional neural networks (CNN) for unstructured data features consequently attracted a lot of focus and achieved a lot of success impressive results. To the best of our knowledge, however, no previous works address Chinese clinical CNN's textual news coverage. High-risk individuals, who may be exploited to reduce healthcare costs, include those who have a many folks have expensive healthcare needs. Furthermore, the primary paper advocating for medical it offered the concept of expectation-based medical care in novel digital real services architecture. Uses, including assessments of potential dangers to health.

Predictions based on the status quo of disease risk models means a decision based on artificial intelligence (such as in strategic relapse and relapse investigation) and in particular an aimed learning calculation that makes use of naming conventions to model up ahead of time.

High-risk patients may be grouped together, and low-risk patients can be grouped together, in the test set. These models are well recognized as being useful in therapeutic settings. Notwithstanding, There are benefits and flaws to these schemes. Data gathering is often done in a usually, the features are picked based on past experience with similar patients and diseases in similar situations.

However, the evolution of the disease and its effects mean that these selected features may not be adequate. Elements. As technology for analyzing vast amounts of data has advanced, more focus several studies have taken a look at disease prognosis from the perspective of big data analysis. Have been guided to hone down on the precision of by picking attributes at random from vast amounts of data risk ranking instead of the current preferred

characteristics. But the ways things are going, for the most part devised a method for categorizing data.

Using convolutional neural networks is a popular technique for processing unstructured data. therefore, using a convolutional neural network (CNN) to disentangle text attributes has historically attracted considerable thought, and they achieved fantastic results. However, to the best of our knowledge and belief, insight, none of past work handles Chinese clinical text information by CNN. introspection, no prior work has dealt with CNN's Chinese clinical text data.

SURVEY OF READINGS,

In 2010, A. Both Rajkumar and G.S. Reena used Naive Bayes-style machine learning methods.

Predicting heart illness using Bayes, KNN (K-closest neighbors), and a list of diagnoses. Use of the Tanagra Using 10-fold cross-confirmation estimates and known data, classifications are made and compared. Within the scope of Table 4. There are 3000 examples total with 14 distinct variables. The data set is split in half. Components, whereby 70% of the data is utilized for training and 30% for testing.

Evaluations are based on by a minimum of ten independent sources. The algorithms used for classifying data are compared and contrasted. The Naive Bayes algorithm is often cited as the top performer. Given how little effort is required to model construction and, in comparison to KNN and Decision Lists, superior accuracy. In 2011, G. A. Subbalakshmi, K. Ramesh, and M. Decision Support was created by Chinna Rao in the Naive Bayes-based data mining modeling for the heart disease prediction system (DSHDPS). Chest discomfort, age, sex, cholesterol, blood pressure, and blood sugar are all factors in cardiovascular disease. Can estimate a person's risk of developing heart disease.

It is mandatory and takes the form of an online survey. Application. Cleveland's UCI repository data collection of cardiac patients' medical histories was utilized to

Decision Support System (DSS) training and testing. Naive Bayes machine learning's use scenarios heart disease prediction method when data is abundant, when qualities are separate from one another, and when we need to compare models with great precision. The Naive Bayes classification method shines when dealing with high dimensional data. Naive Bayes is a simple classification approach that often outperforms its

more complex counterparts. This paper by M.A.Jabbar, Priti Chandra, and B.L.Deekshatulu from 2011 elaborates on a forecast made by a method that combines the ideas of sequence mining with associative rule execution Heart-attraction prediction using cluster analysis. This method was used to generate the first heart disease dataset.

The suggested approach may be used with patient data that has been binary-encoded and transitional data. Cleveland, Ohio's University of California Repository Data Set of Heart Disease Patients crucial characteristics. Cluster-based Association Rule Mining is a common name for this approach. (CBARBSN) on the basis of the Sequence Number. Associative rule mining begins with the introduction of the support parameter. To become part of a common thing that has to meet a certain level of support. This investigation Skipping fragments (irreconcilable subsets of real data) are used to partition the transactional data table into clusters. Each item's Sequence Number and Sequence ID have also been determined (transitional table). At first Various clusters of Sequence ID frequent item sets have been found, and a common frequent item set is now the default for all global items.

The results of the investigation showed that those with an age greater than 45 and blood If your blood pressure is above 120, your heart rate is over 100, your old Peak is below 0, and your Thal is over 3, you are at increased risk of having a heart attack. Common item set beginning in both groups in this study). The time it takes for our suggested method to The time it takes to bring someone to justice under the mining association rules decreases as support grows (i.e., ms when support = 3). A radical departure from the initially envisaged framework.

It was in 2012 when Chaitrali S. Dangare and Sulabha S. Apte put data mining and machine learning into practice. the algorithms of many different machine learning methods, including Decision Trees (J48), Naive Bayes, and Neural Networks on the Brain disease data to develop a state-of-the-art cardiovascular disease forecasting system.

Two data sets were analyzed in this study. Are those that were employed? Cleveland Heart Disease, with its 303 records, and Statlog Heart Disease are two such datasets. Dataset with 270 individual records. Commonly utilized 13 traits plus 2 more traits, namely obesity and the dataset includes smoking status as a potential risk factor for heart disease. Findings in comparison were evaluated using 13-attribute and 15-attribute datasets separately. All 573 of them were split into

a training set of 303 records and a testing set of 303 records. With 270 total entries. In this experiment, we utilize the data mining and machine learning program Weka3.6.6.

Using Replace Missing, we were able to connect and replace missing values in the dataset with the most relevant ones. From Weka3.6.6's Regularized Minimum of Variance (RMV) filter. Our findings are summarized in the table below. According to the findings, neural networks outperform decision trees in terms of accuracy. Tree-based methods and Naive Bayes.

In 2013, A. Decision Tree (J48) and other machine learning techniques were put to use by Taneja. Heart disease forecasting algorithms, ANNs, Naive Bayes, and data mining. The PGI Chandigarh data collection includes 7339 instances and 15 characteristics. WEKA 3.6.4 is a tool. Was utilized in the study. The 10-Fold Cross Validation method is often used for training and evaluating models.

Employing at will. To choose the most useful characteristics among those already in existence, we employed the First Search technique. There are 15 qualities from which only 8 have been chosen. Two subjects per experiment were used. The first example has all 15 properties, but the second case contains just 8 attributes.

From Using the data collected from these various experiments, we have been able to draw some important conclusions. accurate with a 95.56% success rate in the J48 trimmed in chosen characteristics instance.

Naive Bayes is the quickest to construct a model, but its accuracy drops to 91.96 percent when all characteristics are included. in whole experiment. General scientific procedure.

2. IDEA FOR A SYSTEM

We've utilized certain python procedures and analyzed outcomes from prior approaches to classify information from the UCI repository that relates to cardiac illness. It offers a simple way to make advantage of graphic depictions of your dataset, office, and analytics-building processes.

In the first step of a Genetic Algorithm, data is cleaned up and organized.

On assessing the efficacy of data cleaning, categorization, and modeling. Additionally, BAT and BEE algorithms

Help produce a more precise result.

Selecting a suitable mathematical representation to reduce the number of dimensions

Describe the vast majority of the variation included in the data, but not all of it.

Information of great importance. Considered information for a given activity or issue may have several characteristics.

Or scales, but not all inputs have the same effect on output. A wide variety of characteristics,

Factors, such as features, may alter computing complexity and, in certain cases, cause over fitting.

Poor performance. As a result, reducing the number of dimensions must be one of the first considerations in the construction of any

Model. In most cases, feature extraction and feature selection are used to accomplish dimensionality reduction selection.

The evolutionary algorithm may be used to solve optimization problems with constraints and without them. Natural selection, the mechanism by which biological evolution occurs, based problem-solving. This genetic algorithm iteratively refines an existing population of solutions. The genetic algorithm performs each step in an employs members of the present population (parents) to generate offspring (offspring) for the population future generations. Through natural selection, a population "evolves" toward a better solution over time.

The evolutionary algorithm may be used to find optimal solutions too many situations that traditional optimization techniques struggle with. Conventional optimization techniques may be used for a wide range of situations, such as those with a discontinuous objective function. Non-deterministic, random, or very non-linear. There are a variety of challenges that the genetic algorithm can tackle. Programming in which numbers may only be used for certain parts.

Genetic Programming for Robotics: A Bio-Inspired Approach Using Formalized Crossover Operators Applications. Optimization issues in robotics are a common application area for genetic algorithms. Applications. Formal proof of correctness is of paramount importance in safety-critical systems. When using genetic algorithms.

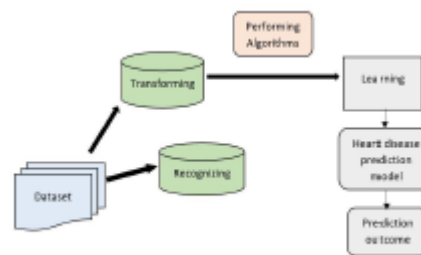


Fig 2.1 Infrastructure Setup of the Proposed System

3. EXPERIMENTATION

The goal of this research is to use Bio Inspired 4 features optimization algorithms such the Genetic Algorithm, Bat Algorithm, Bee Algorithm, and ACO to identify heart disease in a dataset. We are constructing the Genetic, Bat, and Bee algorithms because the ACO method, which was designed in Python to solve the Travelling Salesman Problem and discover the shortest route, fails miserably when applied to the heart disease dataset.

In order to improve the prediction accuracy of classification algorithms, bio-inspired algorithms are designed to optimize the features used in datasets for training these algorithms. Since some datasets may contain irrelevant values within the dataset, optimizing algorithms can remove these features (attribute values) from the dataset. If an attribute is judged to be irrelevant to the dataset after being run through these optimized techniques, it will be eliminated.

We are utilizing a dataset on heart illness to test our algorithms; this dataset has 14 variables and 4 class labels (0 = no heart disease, 1 = stage 1 disease, 2 = stage 3 disease, and 3 = stage 4 disease).

Age, sex, cp, trest bps, chol, fbs, restec g, thalach, exang, old peak, slope, ca, thal, class are some examples of data used to train algorithms.

63.0,1.0,1.0,145.0,233.0,1.0,2.0,150.0,0.0,2.3,3.0,0.0,6.0,0
67.0,1.0,4.0,160.0,286.0,0.0,2.0,108.0,1.0,1.5,2.0,3.0,3.0,2
67.0,1.0,4.0,120.0,229.0,0.0,2.0,129.0,1.0,2.6,2.0,2.0,7.0,1
37.0,1.0,3.0,130.0,250.0,0.0,0.0,187.0,0.0,3.5,3.0,0.0,3.0,0

The dataset's column names are listed first, followed by the dataset's values. The progression of the illness is represented by the numbers 0 through 3 in the last column.

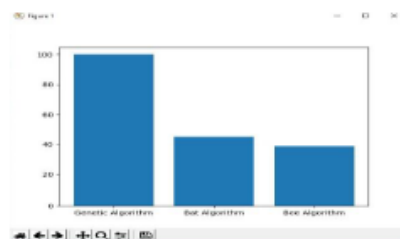
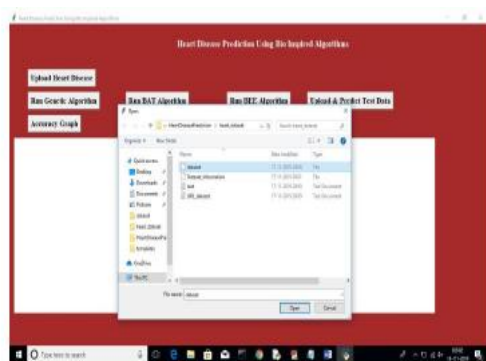


Fig 4.1 Accuracy Graph

5. CONCLUSION

The program will use the values from the test dataset, which does not have class labels, to predict the class labels for the records in the train dataset. Extracted from a sample dataset.

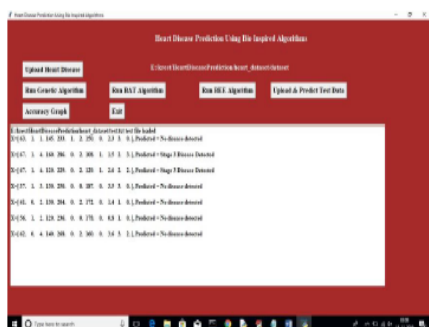
age,sex,cp,trestbps,chol,fbs,restecg,thalach,exang,oldpeak,slope,ca,thal

63.0,1.0,1.0,145.0,233.0,1.0,2.0,150.0,0.0,2.3,3.0,0.0,6.0

67.0,1.0,4.0,160.0,286.0,0.0,2.0,108.0,1.0,1.5,2.0,3.0,3.0

67.0,1.0,4.0,120.0,229.0,0.0,2.0,129.0,1.0,2.6,2.0,2.0,7.0

The aforementioned test dataset shows that the program is able to anticipate a class name even while none exists.



4. RESULTS

Disease phases have been anticipated using the aforementioned screen application. To see the efficacy of all algorithms as a graph, click the "Accuracy Graph" button now.

Using three different bio-inspired algorithm modeling strategies, a method for predicting the onset of heart disease has been created. With a dataset that includes patients' medical history like chest pain, sugar level, blood pressure, serum cholesterol, maximum heart rate achieved etc., this project predicts person with heart disease. If a patient has already been diagnosed with heart disease, this heart disease detection method may help. Genetic, BAT, and BEE algorithms are utilized to construct the specified model. Our model's accuracy is one hundred percent. More training data improves the model's likelihood of making a correct diagnosis of heart disease in a particular individual.

Using these computer-aided methods, we can make more accurate, timely, and affordable patient predictions. Since these bio-inspired techniques are superior and can make more accurate predictions than humans, they can be applied to a variety of medical databases that benefit both patients and medical professionals. Thus, this project allows us to predict patients who have been diagnosed with heart diseases by means of data cleaning and the application of a genetic algorithm. The accuracy of the BAT algorithm is determined to be 45%, whereas that of the BEE algorithm is determined to be 38%.

One day, a genetic algorithm will allow us to achieve perfect precision. This leads us to believe that the Genetic Algorithm is superior to the BAT and BEE algorithms in terms of accuracy. This also offered an accurate graph representation of all methods. The accuracy of several algorithms is shown against their x-coordinate on a graph.

6. CITATIONS

"Big data: A survey," *Mobile Netw. Appl.*, vol. 19, no. 2, pages 171- 209, Apr. 2014 [1].

"Enabling real-time information service on telehealth system using cloud-based big data platform," J. Wang, M. Qiu, and B. Guo, *J. Syst. Archit.*, vol. 72, pp. 69-79, January 2017. Big data

in healthcare: using analytics to identify and treat high-risk and high-cost patients, D. W. Bates, S. Saria, L. Ohno-Machado, A. Shah, and G. Escobar, *Health Affairs*, vol. 33, no. 7, pp. 1123-1131, 2014.

"A dynamic and self-adaptive network selection technique for multimode communications in heterogeneous vehicular telematics," *IEEE Trans. Intell. Transp. Syst.*, vol. 16, no. 6, pp. 3033-3049, Dec. 2015; D. Tian, J. Zhou, Y. Wang, Y. Lu, H. Xia, and Z. Yi.

Using associative classification mining and fast rules, K. Prasanna Lakshmi and Dr. C.R.K.Reddy presented at the *IEEE International Conference on Computer, Communication, and Control (IC4-2015)*.

Journal of Multidisciplinary Engineering Science and Technology (JMEST) ISSN: 3159-0040 Volume 2 Issue 2 February-2015 Boshra Bahrami, Mirsaeid Hosseini Shirvani "Prediction and Diagnosis of Heart Disease by Data Mining Techniques"

"Simultaneous modeling of various illnesses for mortality prediction in acute hospital treatment," by Nori, Kashima, Yamashita, Ikai, and Imanaka (2015, pp. 855-864) in *Proceedings of the 21st Annual ACM SIGKDD International Conference on Knowledge Discovery and Data Mining*.

In 2015, researchers M.Satish and D. Sridhar published "Prediction of Heart Disease in Data Mining Technique" in the *International Journal of Computer Trends and Technology (IJCTT)*.

An Intelligent Decision Support System for Cardiac Disease Detection, Lokanath Sarangi, Mihir Narayan Mohanty, and Srikanta Pattnaik, *International Journal of Computer Theory and Applications*, International Press, 2015.

To predict cardiovascular risk using electronic health record data, a Bayesian network model was developed by S. Bandyopadhyay et al. [9]. *Knowledge Discovery in Data Mining, Volume 29, Issue 4, Pages 1033-1069, 2015*.

"A relative similarity based technique for interactive patient risk prediction," B. Qian, X. Wang, N. Cao, H. Li, and Y.-G. Jiang, *Data Mining Knowl. Discovery*, vol. 29, no. 4, pp. 1070-1093, 2015.

Incorporating temporal EHR data in predictive models for risk stratification of renal function deterioration, [11] A. Singh, G. Nadkarni, O. Gottesman, S. B. Ellis, E. P. Bottinger, and J. V. Guttag. Feb. 2015 issue of *J. Biomed. Inform.*, volume 53, pages 220-228.

The 'Big Data' Revolution in Healthcare: Accelerating Value and Innovation[12] by Peter Groves, Bilal Kayyali, David Knott, and Stephen van Kuiken. *Business Technology Office, Center for U.S. Health System Reform*. 2016.

"Smart clothing: Connecting human with clouds and big data for sustainable health monitoring,"

by M. Chen, Y. Ma, J. Song, C. Lai, and B. Hu [13]. Published in 2016 by ACM/Springer, volume 21 issue 5 pages 825–845.

According to [14] "Enhanced fingerprinting and trajectory prediction for IoT localisation in smart buildings," by K. Lin, M. Chen, J. Deng, M. M. Hassan, and G. Fortino. July 2016 issue of *IEEE Transactions on Automotive Science and Engineering*, pages 1294-1307.

"Emotion communication system" by M. Chen, P. Zhou, and G. Fortino, *IEEE Access*, volume 5, pages 326-337, 2017, doi: 10.1109/ACCESS.2016.2641480.

"HealthCPS: Healthcare cyberphysical system helped by cloud and big data," by Y. Zhang, M. Qiu, C.-W. Tsai, M. M. Hassan, and A. Alamri. *IEEE Systems Journal*, volume 11 issue 1 (March 2017), pages 88–95.

According to [17] *Big Data Analytics for Cloud/IoT and Cognitive Computing* by K. Hwang and M. Chen. 2017 Wiley; Hoboken, NJ, USA.

"Predicting the Risk of Heart Failure with EHR Sequential Data Modeling," Bo Jin, Chao Che, Zhen Liu, Shulong Zhang, Xiaomeng Yin, and Xiaopeng Wei, *IEEE Access* 2018.

Heart Disease Prediction Using Evolutionary Rule Learning, International Conference on "Computational Intelligence and Communication Technology" (CICT 2018), Aakash Chauhan, Aditya Jain, Purushottam Sharma, and Vikas Deep. In [3] Ashir Javeed & Shijie Zh

Heart Disease Prediction Using Evolutionary Rule Learning, International Conference on Computational Intelligence and Communication Technology (CICT 2018), Aakash Chauhan, Aditya Jain, Purushottam Sharma, and Vikas Deep. In [3] Ashir Javeed & Shijie Zh *Effective Heart Disease Prediction Using Hybrid Machine Learning Techniques*, Senthilkumar Mohan, Chandrasegar Thirumalai, and Gautam Srivastava, *IEEE Access* 2019.

International Conference on Communication and Signal Processing 2019, "Prediction and Diagnosis of Heart Disease Patients using Data Mining Technique," by Mamatha Alex P and Shaicy P Shaji.